

THE DECORATIVE STORY

Dear customer, it's our privilege that you have selected advance laminates for your surface decoration requirement. We have over 300 options in various finishes for your residential & commercial spaces be it your drawing room, bedroom, kitchen, wardrobe, office or showroom, we have everything for all needs. Utmost care has been provided while manufacturing each & every sheet because we understand the emotion of the end users while selecting the design. This presentation also has QR codes given with each design if you wish to see the full sheet view of any design. Also we have given an application book that will help you while selecting the designs according to a particular application.

HAPPY DESIGNING!



SURFACING SOLUTION *for* EXTERIOR

Endless Possibilities with High pressure Laminates for exterior wall cladding.

ADVANCE EWC is a laminated panel for exteriors that requires zero maintenance. The panels combine the virtues of wood, its natural warmth and beauty, with technical requirements to ensure optimum performance on exteriors over time. ADVANCE EWC can be installed as a ventilated facade by way of overlapping slats, on false ceilings and on curved walls.

Make a great impression of your building's exterior. Don't leave any surface unattended. Our high-pressure exterior grade wall cladding panels ensure design flexibility and offer the durability you need for exterior designs.

When it comes to designing for an exterior, high-quality is a prerequisite. You want a decorative facade that can meet extreme requirements.

With ADVANCE EWC, you can also gain the peace of mind that you're working with a sustainability company.



LET'S DECORATE INDIA

OUR COMPANIONS IN
Decorating **INDIA** mission

Scan & view the video of our companion stars



RASHMI
DESAI



BRIJENDRA
KALA



VRAJESH
HIRJEE



SUSHANT
SINGH



KIKU
SHARDA



RAJENDRA
CHAWLA



ANANT
MAHADEVAN



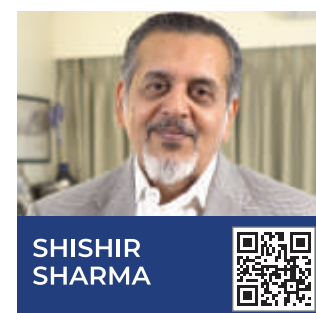
MAHIMA
CHAUDHRY



SHUBHANGI
ATRE



KIRAN
KUMAR



SHISHIR
SHARMA



MAHESH
THAKUR



RAKESH
BEDI



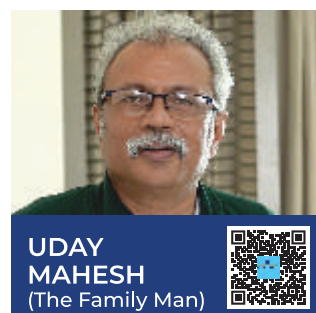
ANANG
DESAI



NEERAJ
MADHAV
(The Family Man)



PRIYAMANI
(The Family Man)



UDAY
MAHESH
(The Family Man)



NUMBERS THAT SPEAK OUR **STRENGTH**

STATES 21

DISTRIBUTORS 87+

DEALERS 41351+

ARCHITECTS 20815+

INTERIOR DESIGNERS

CARPENTERS 50383+

RECOMMENDATION

SHEETS USED 50 MILLION+

BY CONSUMERS TILL 31st MARCH 2022

www.advancelam.com

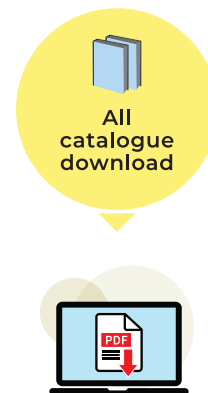
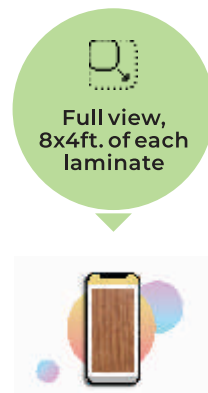
Your favorite brand is now supported with
world class website

User interface
modified for
all devices:

(Mobile, TAB, Windows
desktop & laptop,
MAC desktop)



Answer
to all your
FAQ'S,



QR CODE an added advantage to **CHOOSE HPL**

Scan the **QR CODE** given with each & every shade and
also get inspired with applications given for each shade.



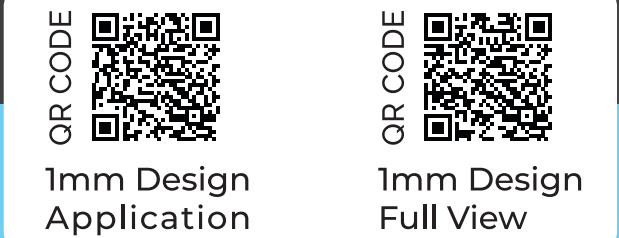
ADVANCE ONE MM
SPECIAL DIGITAL FOLDER
is available in PDF format



A Exterior Wall Cladding
Folder of ADVANCE is also
available in PDF format



Just touch the shade you want to
see & view a full view & application
of your selected shades.



EWC Application Booklet
is available in PDF format



EWC Full Figure Booklet
is available in PDF format

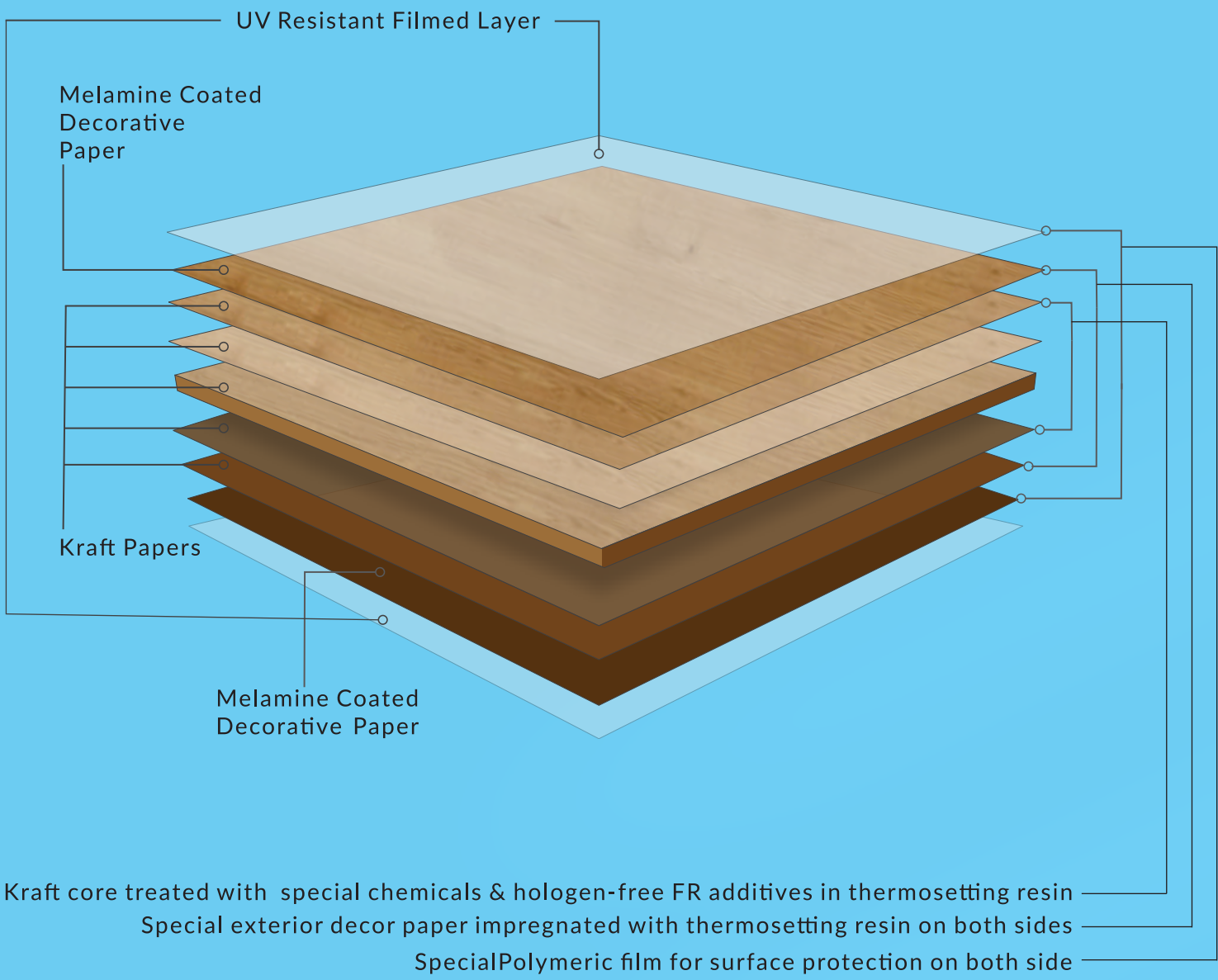


EXTERIOR Wall Cladding
Folder is available in
PDF format



PRODUCT DESCRIPTION

- **ADVANCE EWC (HPL)** is made with special type of synthetic polymers with UV resistant filmed layer that provides superior weather ability, excellent UV-absorbance and heat resistant performance.



— UNMATCHED — FEATURES



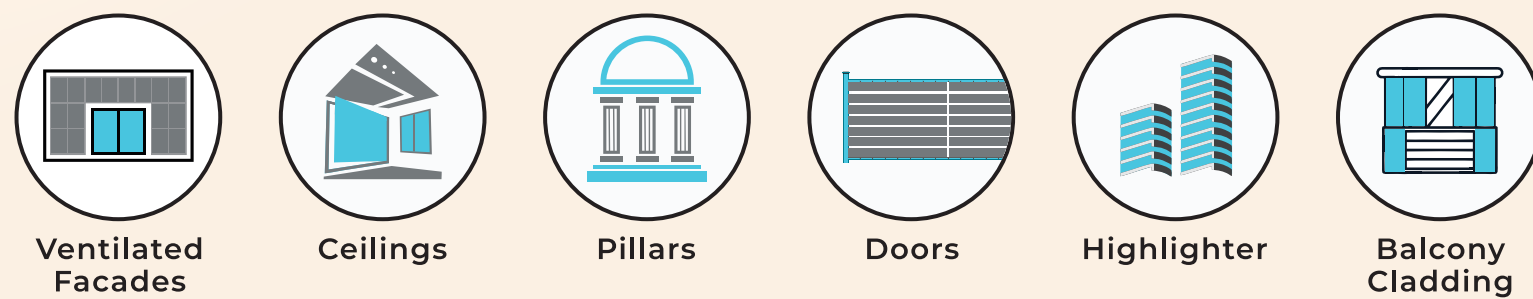
 <p>FIRE RETARDANT</p>	 <p>ANTI-DUST</p>	 <p>TERMITE RESISTANT</p>	 <p>ENERGY EFFICIENT</p>
 <p>CHEMICAL RESISTANT</p>	 <p>MATCHING RIVETS</p>	 <p>MOISTURE RESISTANT</p>	 <p>ACOUSTIC RESISTANCE</p>
 <p>ENVIRONMENT FRIENDLY</p>	 <p>RESISTANCE TO ACID RAINS</p>	 <p>ANTI-BACTERIAL & ANTI-FUNGAL</p>	 <p>EXCELLENT ANTI-GRAFFITI</p>
 <p>CAN WITHSTAND EXTREME TEMP. CONDITIONS FROM -60OC TO +80OC</p>		 <p>SUPERIOR LIGHT FASTNESS PERFORMANCE (UV RESISTANCE)</p>	

EXPLORE The HPL on exterior

A wonderful product with multiple possibilities of cladding.

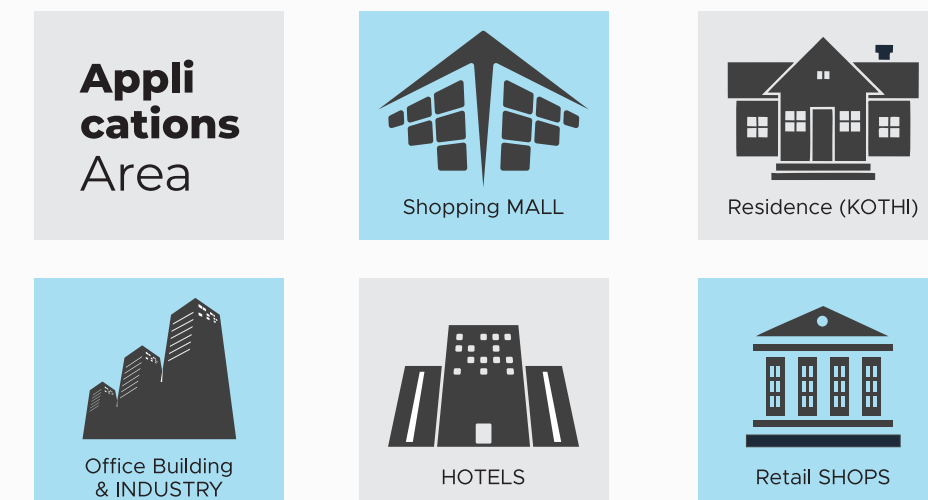
with **ADVANCE HPL** you can decorate your external wall surface and protect it against heat, rain dust. **ADVANCE HPL** not only beautify the external wall but also protect it to save energy. You can use it on external surface of your exterior.

Areas of use in exterior wall cladding:



MULTIPLE APPLICATION POSSIBILITIES

Advance HPL is versatile panel it can be used at all type of buildings. It is most suited at the following application areas:



Applications Places

- Residence (Kothis)
- Shopping Malls
- Hotels Motels Residence (High Rise Apartments) .
- Industries
- Office Buildings
- Retail Shops
- Airport Terminals
- & many more...

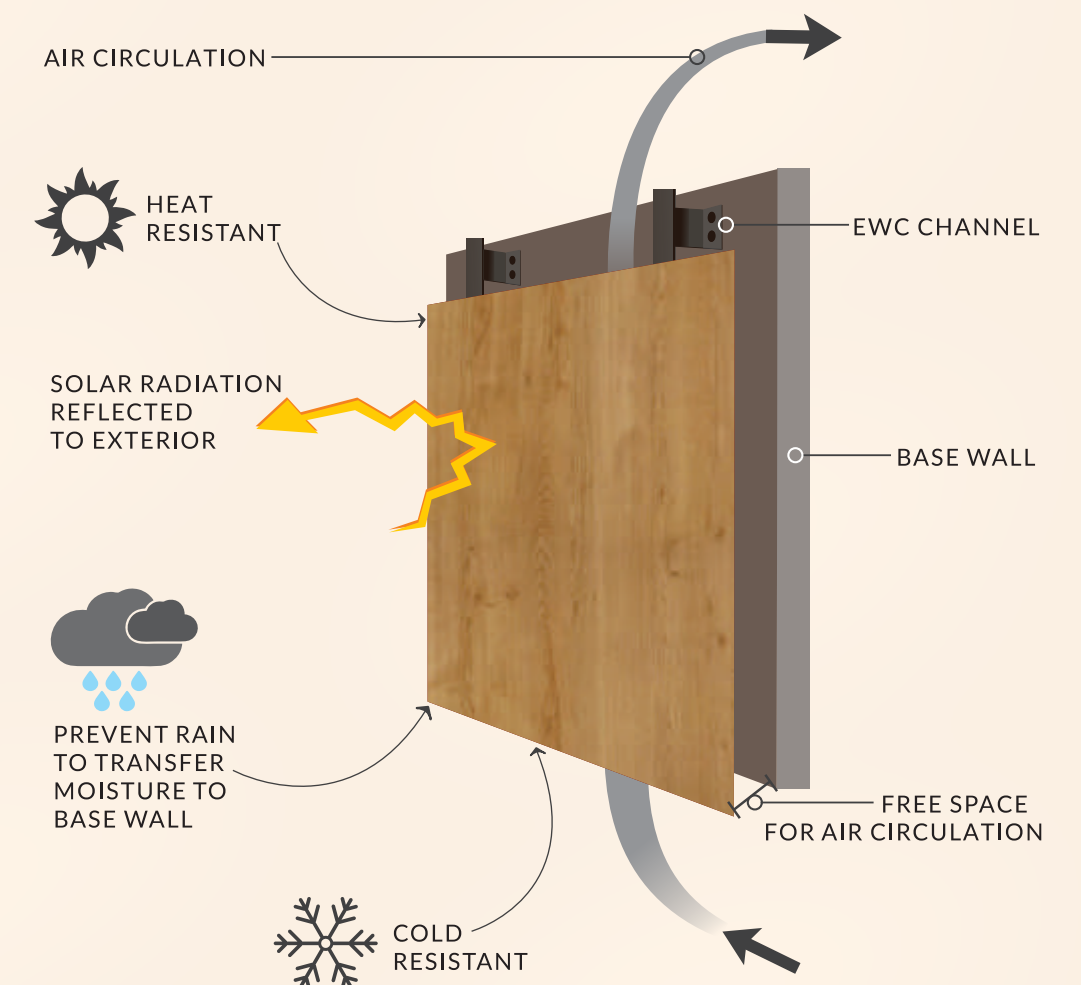


Apart from above motioned areas it can also be used as following

- Partitions- Railings - Fences - Outdoor Furniture
- Public Facilities - Playground Facilities
- Sports Facilities - Sun Protection System
- Office Entry Portals - Windows

ADVANCE HPL CONSTRUCTION

NOT ONLY BEAUTIFY BUT ALSO KEEPS EXTERNAL WALL COOL THUS PREVENT EXTERNAL HEAT TO COME INSIDE. ADVANCE EWC PREVENT DIRECT HEAT TO FALL ON BASE WALL THAT PROVIDES MORE COMFORTABLE ENVIRONMENT & SAVES THE SIGNIFICANT ENERGY.



CERTIFICATE and accolades *Proof of our excellence*



SPECIFICATIONS

1. Aluminium cube channel should be of 50x25x2mm thick or 38x38x2mm thick. Every junction of two panel's aluminium cube channel 63x38x2mm thick or 75x38x2mm thick. (channel should be powder coated anodized)
2. Channel fixing will be fixed using 100mmx10mm anchor bolt on the wall in distance of 900mm c/c. Riveting hole on sheet should be 8mm.
3. Riveting hole on channel should be 5mm. Riveting distance between each rivet in horizontal 450mm-600 mm c/c in elevation.
4. Riveting distance between each rivet in vertical 300mm-450mm c/c in elevation.
5. For the edge plank. Riveting distance between each rivet is 300mm-450mm c/c in ceiling.
6. For the start point from the edge of the wall, Riveting point marking will be 25mm in horizontal and 50mm in vertical in order to match the centre of the aluminium section.
7. Groove or Gap between each panel in horizontal & vertical should be 4mm-6mm..

CARE AND MAINTENANCE:

To clean the surface, use a damp cloth or sponge and a mild soap or detergent. The use of cleaners containing abrasives, acids or alkalis may damage the decorative surface. Being anticorrosive and antibacterial in nature of cladding, there is no special maintenance apart from cleaning is required.

WARRANTY:

The Company provides the warranty to the consumer/purchaser for 11 years ("to retain the laminate properties as per requirement of: (EN438-6:2005) standard specified for exterior grade) after date of purchase that, under normal use and service, EWC (HPL) Laminate Sheets are free from manufacturing defects and confirm to specifications. This Warranty is not transferable and applies only to a EWC Laminate sheet and is extended only to, and may be enforced only by, the consumer/purchaser. Proof for date of purchase is required to avail warranty. This warranty shall not apply to damage arising from improper fabrication or installation, improper maintenance or repair, accidents, abuse or misuse. Slight homogeneous variation in color may take place in course of time. In case of any dispute or difference which arises out of these warranty terms, the same shall be exclusively subject to the jurisdiction of the courts of law in Delhi, India. Company warrants that its products are of high quality standards. Nevertheless, in case of any product complaints the company's liability will be limited to the cost of its products only. In no event shall its company or its dealers/stockists be liable for any other loss or damage arising out of its products.

Let's Explore the applications of External wall cladding (EWC or HPL)

Garden & Swimming Pool



House



Gate



Shopping Mall

House



Gate



6151 SF
TABLILLA
SLOT

6146 SF
GREY SHIELD
STONE PG-35



6151 SF / TABLILLA SLOT

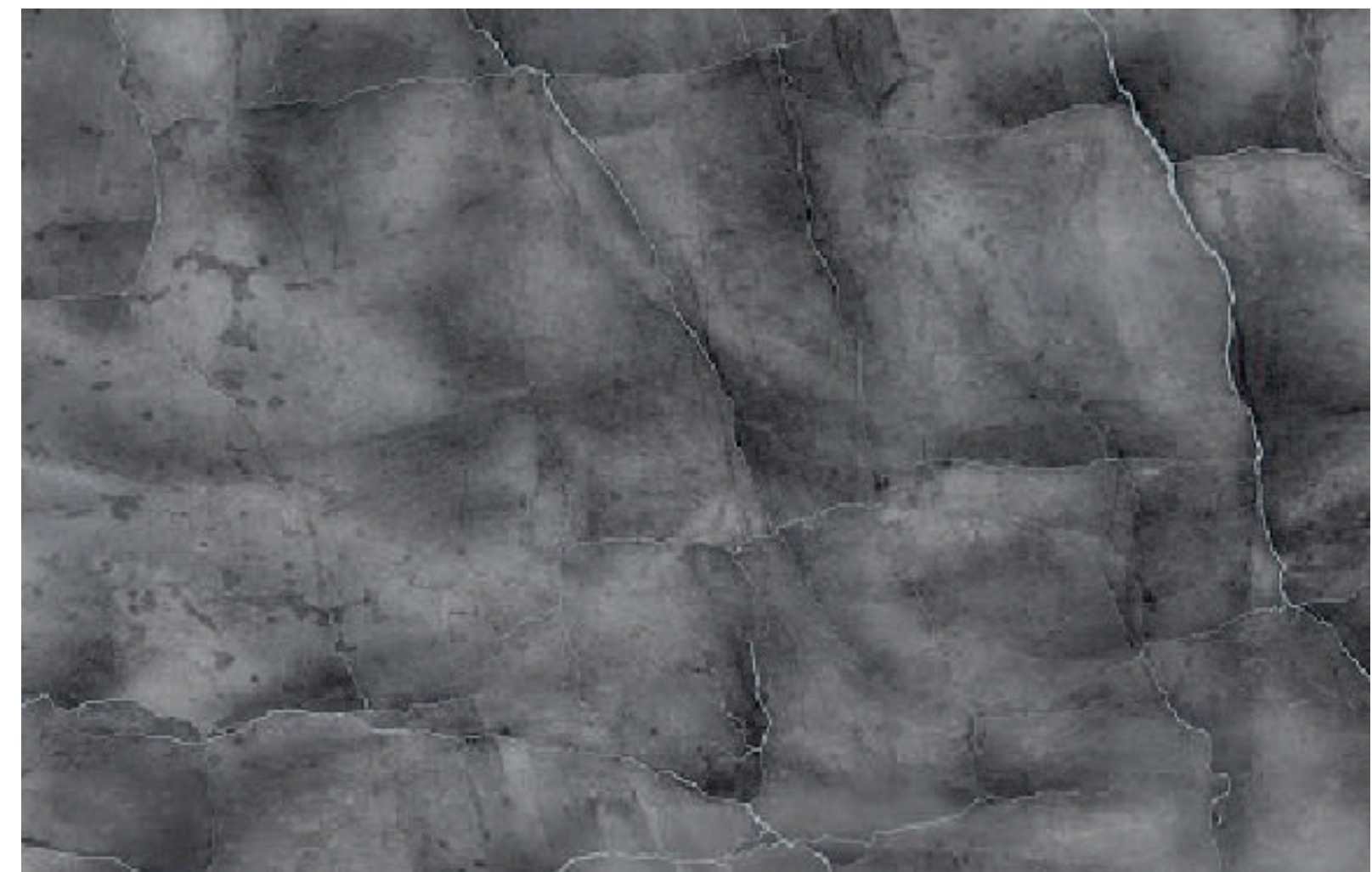
6149 SF
RIVER
ROCK



6149 SF RIVER ROCK

NO PARKING
FRONT OF THE
GATE

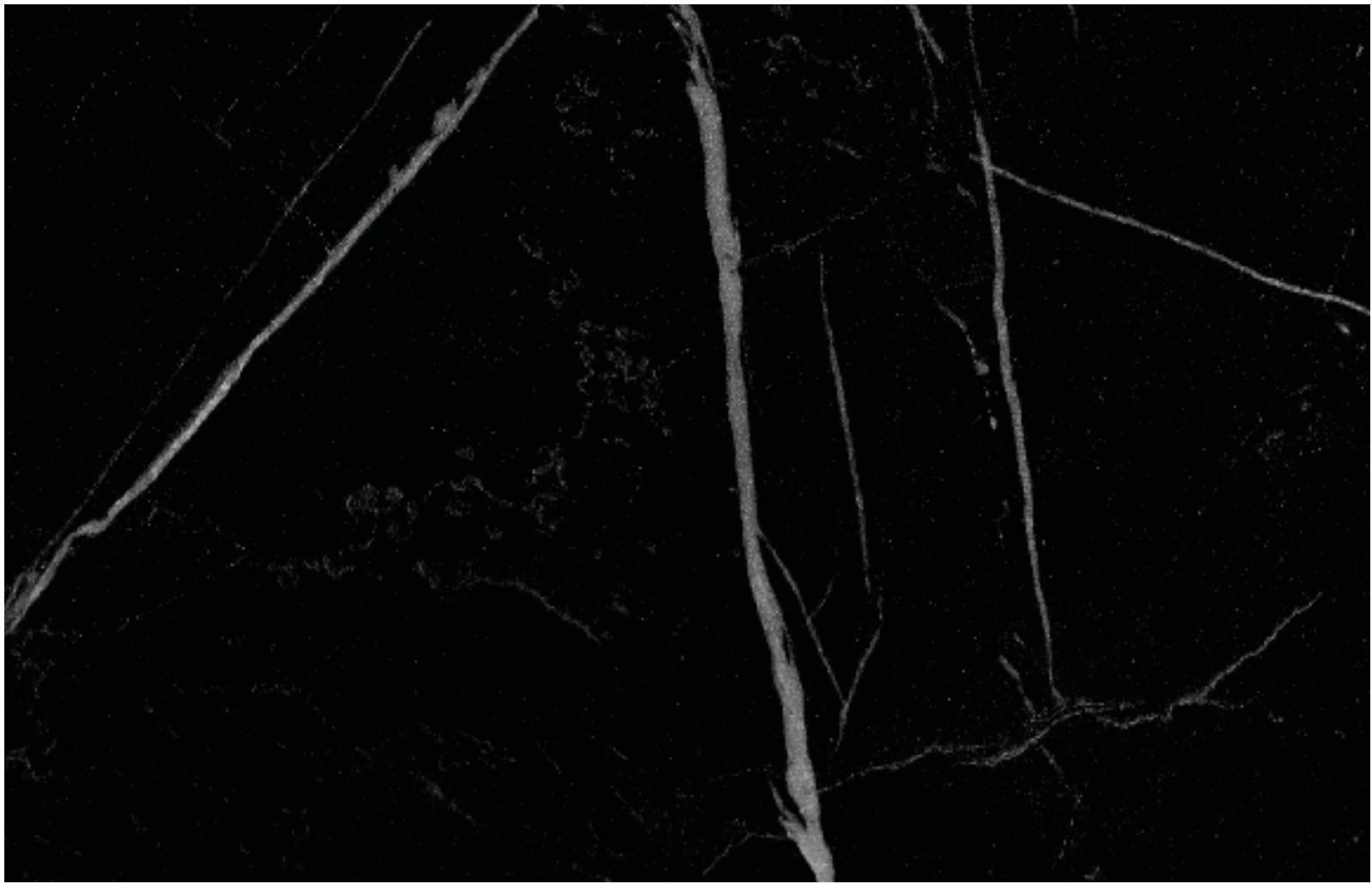
6152 SF
VERONA
WALNUT
PG-21



6150 SF MARMO DI METALLIC STONE



6120 SF TORANO STONE



6124 SF ZEBRA MARBLE



6107 SF
GRENADA PINE

6108 SF
HASTINGS
SANDAL
PG-23



6107 SF / GRENADA PINE



6152 SF VERONA WALNUT



6137 SF WALNUT LEANDRO



6152 SF
VERONA
WALNUT

6150 SF
MARMO DI
METALLIC
STONE
PG-16



6108 SF HASTINGS SANDAL



6109 SF CANYON MOUNTAIN WALNUT

6109 SF
CANYON
MOUNTAIN
WALNUT



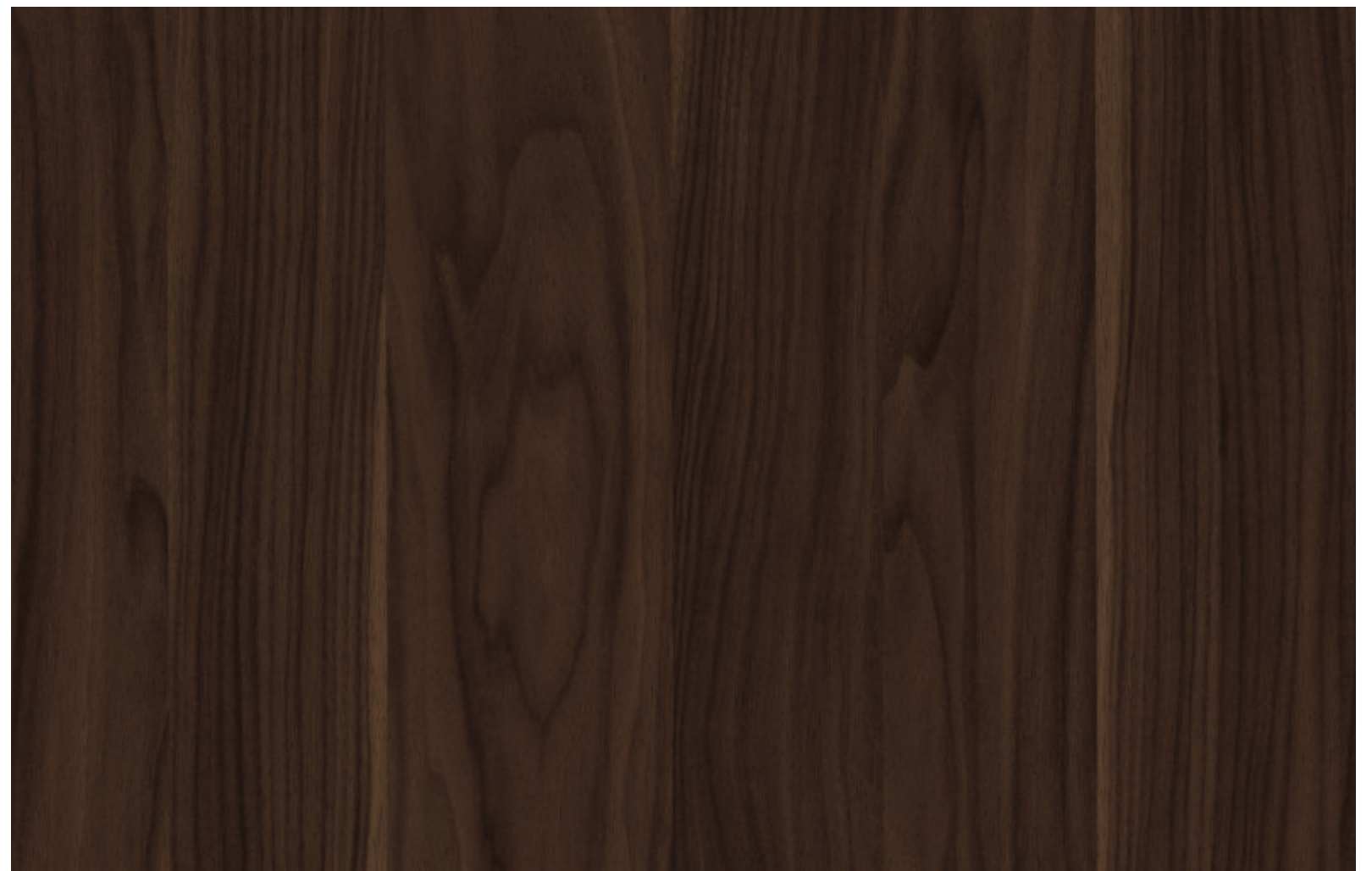


6112 SF
ISTANBUL
WALNUT

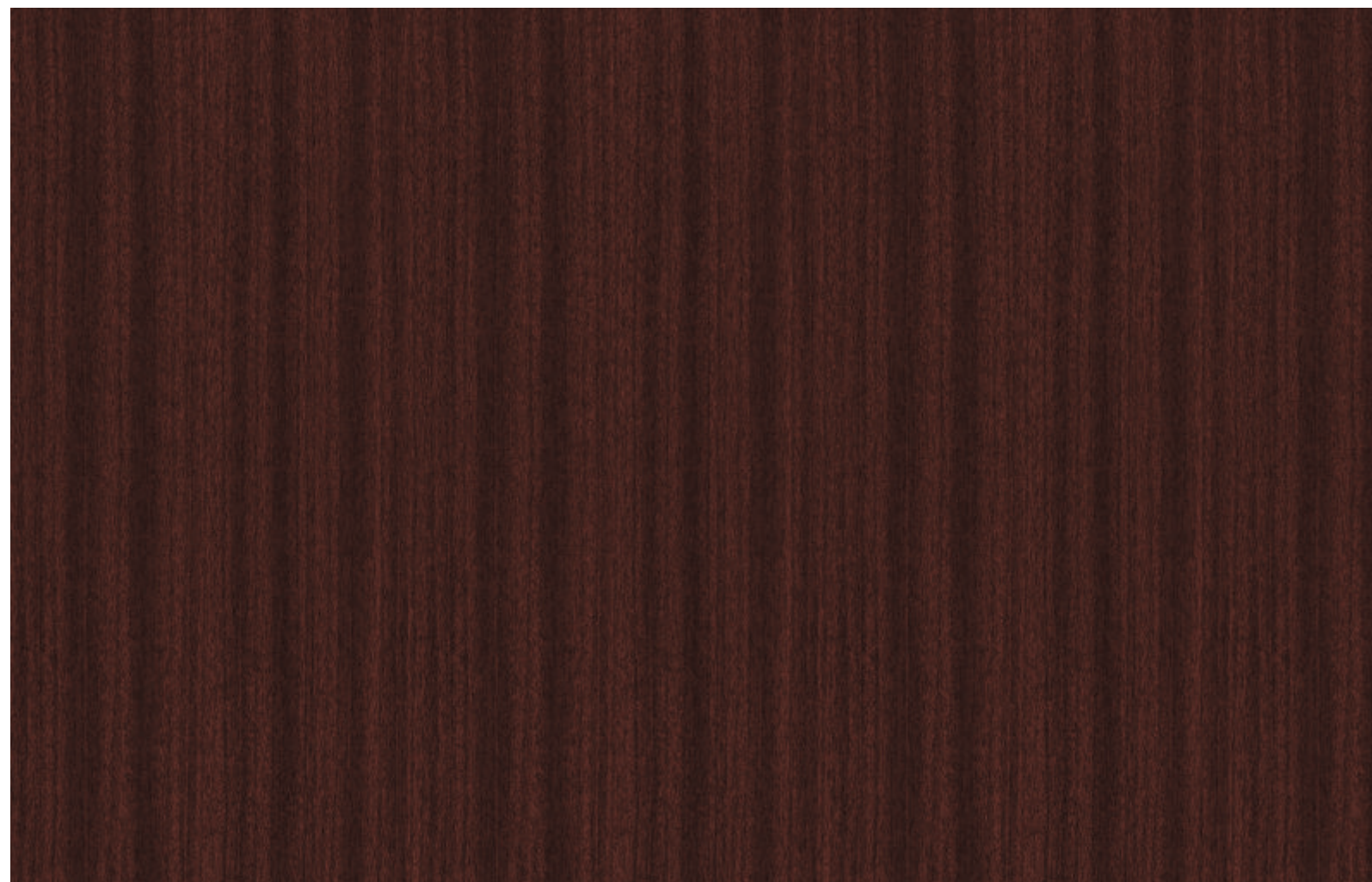
6145 SF
SHIELD
STONE



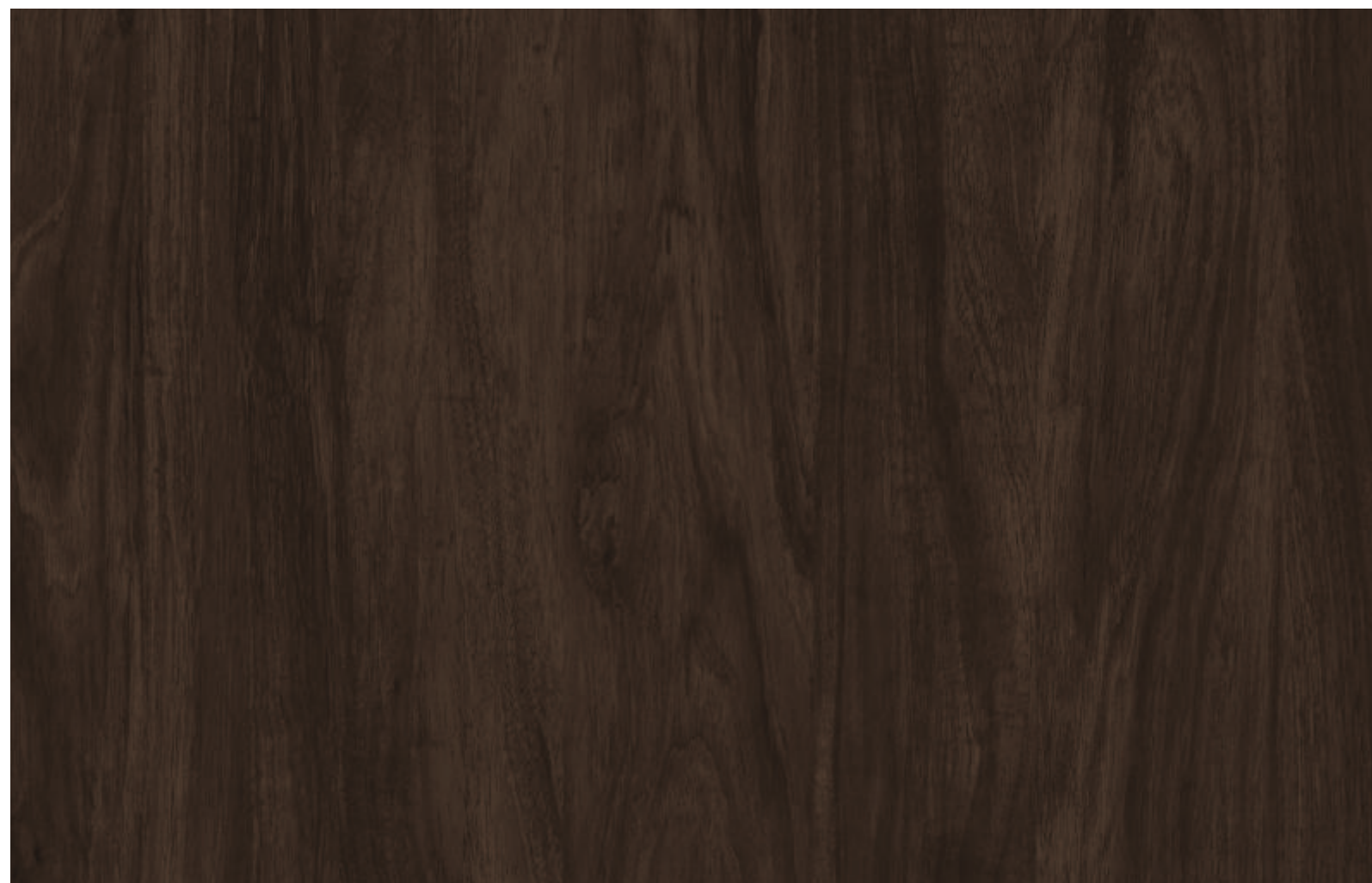
6112 SF / ISTANBUL WALNUT



6115 SF / NORTH WALNUT



6113 SF MAHOGANY



6111 SF BENGALI MANGO



6111 SF
BENGALI
MANGO

6107 SF
GRENADA
PINE
PG-20



6152 SF
VERONA
WALNUT
PG-21



6151 SF
TABLILLA SLOT
PG-14



6108 SF
HASTINGS SANDAL
PG-23



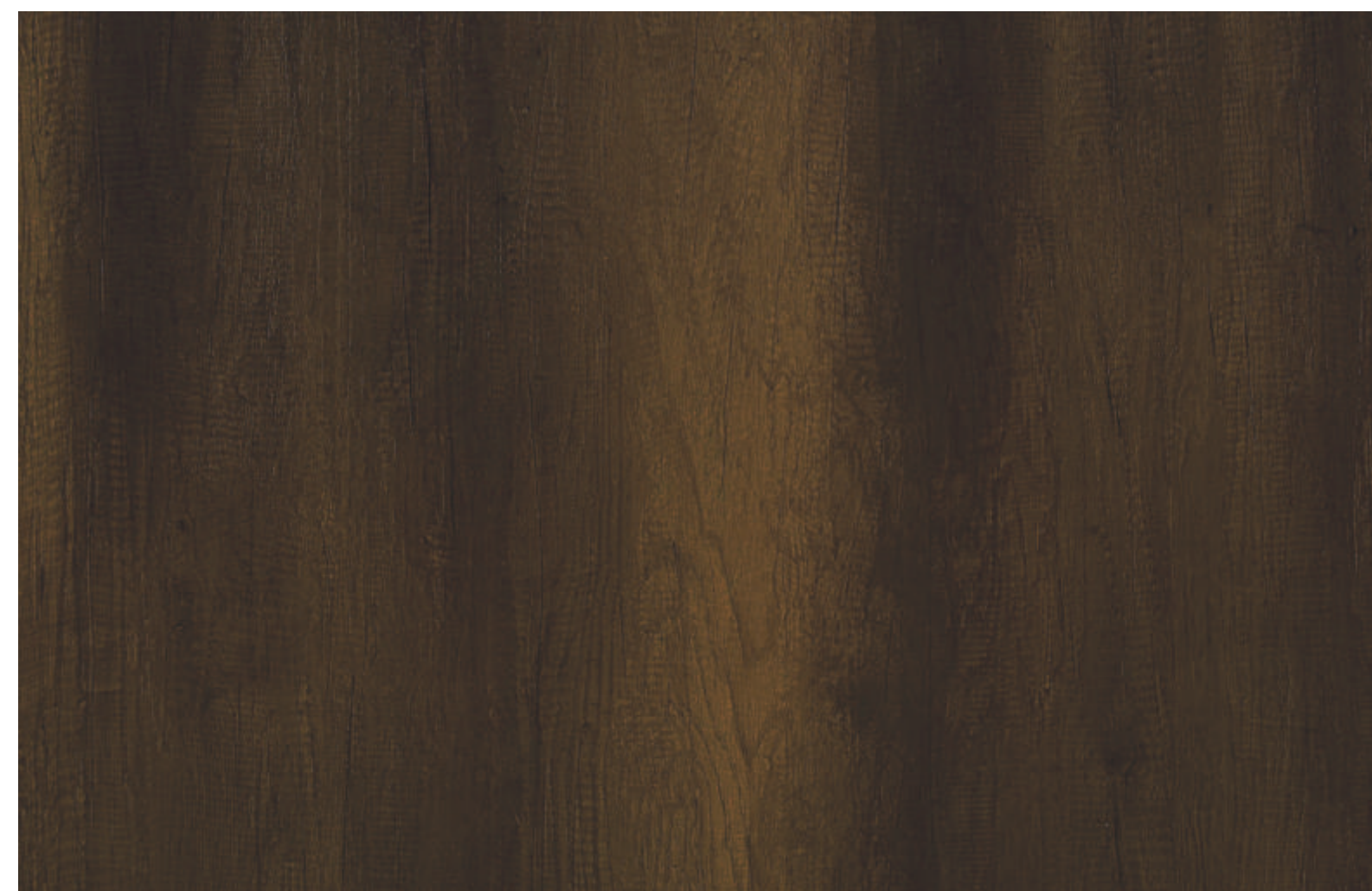
6111 SF
BENGALI MANGO
PG-27

6114 SF
DELANO EICHE



6114 SF DELANO EICHE

6110 SF
CANYOUN MOUNTAIN OAK



6110 SF CANYOUN MOUNTAIN OAK

6104 SF
JACKSON
HICKORY

6110 SF
CANYOUN
MOUNTAIN OAK
PG-32



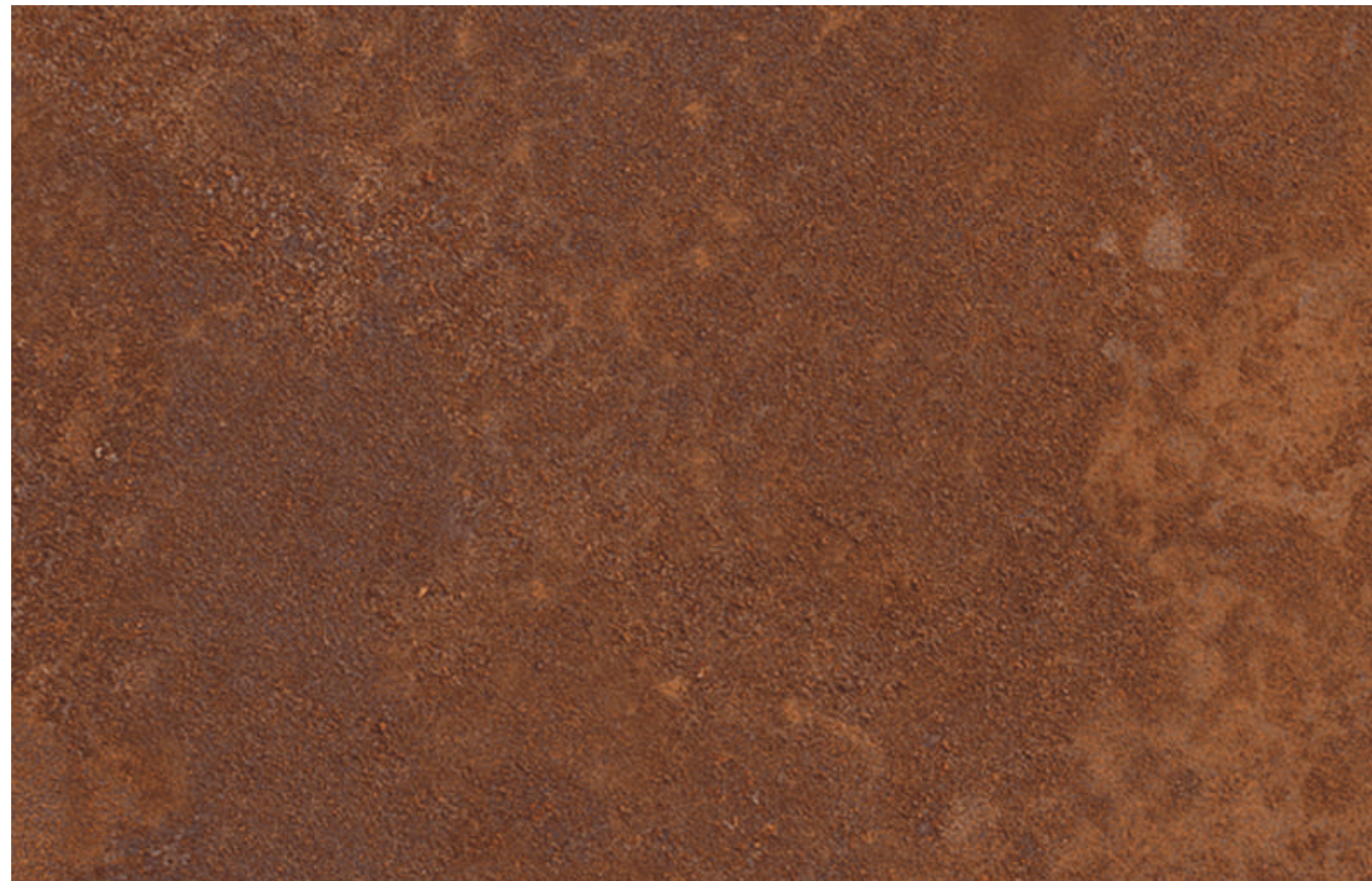
6103 SF JACKSON HICKORY GREY



6104 SF JACKSON HICKORY



6146 SF GREY SHIELD STONE



6121 SF CYPRUS METAL STONE

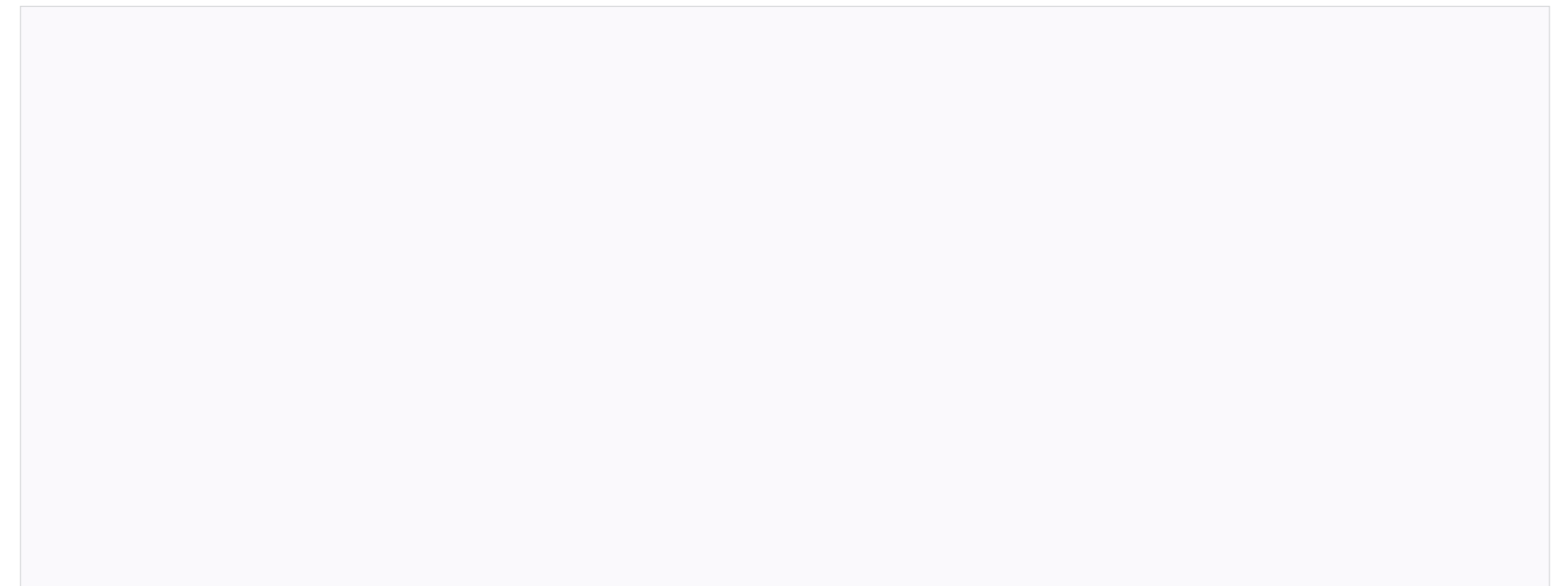


6113 SF
MAHOGANY
PG-27

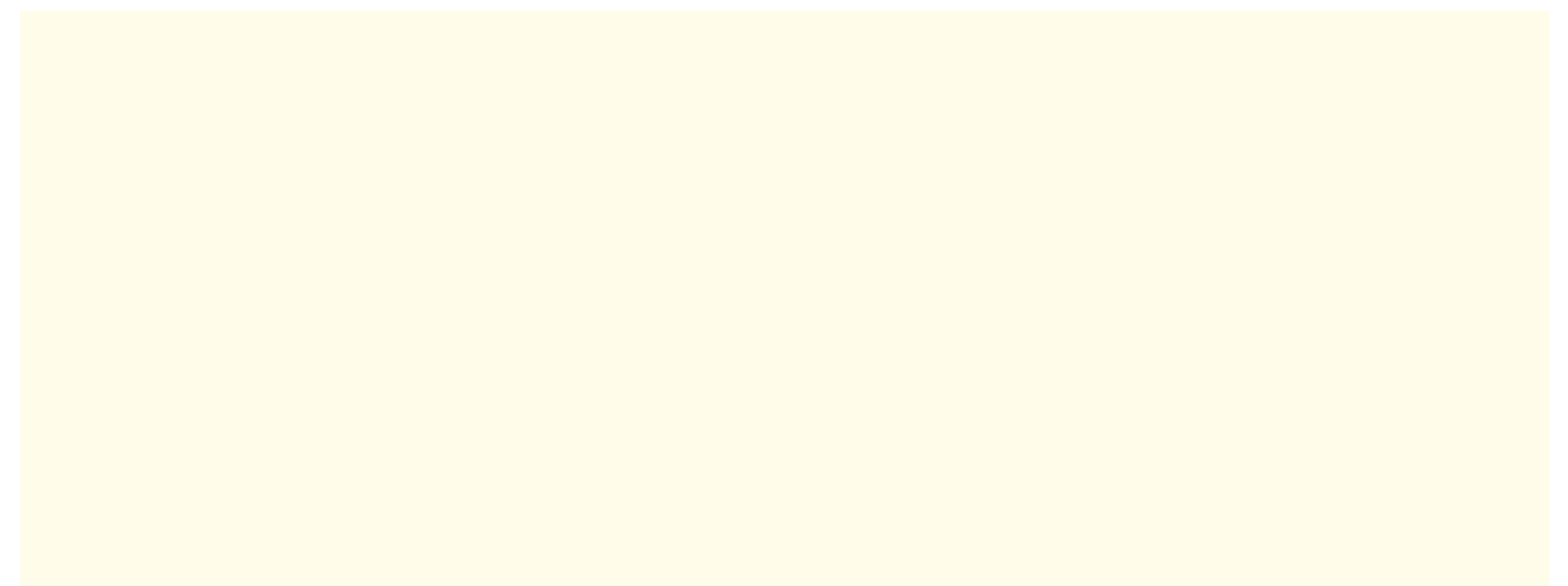
662 SF
FROST
WHITE



671 SF / NIGHT GREY



660 SF / ABSOLUTE WHITE



662 SF / FROST WHITE

Advance EWC

PRODUCT : High pressure decorative laminated sheets
SIZE : 2440 x 1220 mm
THICKNESS : 6.00 mm

EXTERIOR WALL CLADDING TEST REPORT					
TECHNICAL SPECIFICATIONS					
Properties		Test Method	Unit	Standard Value	Test Results Of Advance Laminates
Thickness		EN 438 2-5	mm	6.0 ±0.40 mm	6.0 ±0.30 mm
Length & Width		EN 438 2-6	mm	+10-0	+5 mm
Edge Straightness		EN 438 2-7	mm/M	≤ 1.5	< 1.5
Squareness		EN 438 2-8	mm/M	≤ 1.5	< 1.5
Flatness		EN 438 2-9	mm/M	Max 5.0 mm/M	Max 4.0 mm/M
Resistance to impact by large Daimeter Ball		EN 438 2-21	mm	1800mm	2000mm
				Dropped Hight	Dropped Hight
Dimensional Stability at Evevated Temperature		EN 438 2-17			
	A) Longitudinal		%	0.30 (Max.)	0.20
	B) Transverse		%	0.60 (Max.)	0.32
Panel Surface Visibility		EN 438-2:5.2.4.2	Dirt, spots, any similar surface defects	≤ 2 mm/m²	Accepted
			Fiber, hair, scratches & similar surface defects	≤ 20 mm/m²	Accepted
Flexural Modulus		ISO 178	Mpa	9000 (Min.)	9500
Flexural Strength		ISO 178	Mpa	80 (Min.)	90
Density		ISO 1183	g/cm3	1.35 (Min.)	1.40
Resistance to wet conditions, increase in mass		EN 438-2:15	Increase in mass	8% (Max.)	3.5
			Appearance		
			• Surface rating	4 (Min.)	5
			• Edge rating	3 (Min.)	3

LIGHT FASTNESS AND WEATHER RESISTANCE				
Resistance to artificial weathering including light fastness, after 650 MJ/M²	EN 438-2:29	Contrast	Grey Scale Rating	3-4
	EN 438-2:29	Apperance	Rating	4-5
Resistance to UV light, after 1500 hours exposure	EN 438-2:28	Contrast	Grey Scale Rating	3-4
	EN 438-2:28	Apperance	Rating	4-5
Resistance to climatic shock	EN 438-2:19		Index Ds (min)	≥0.95
			Index Dm (min)	≥0.95
			Rating (min)	≥4



ALL WEATHER RESISTANT



UV RESISTANT



CORROSION RESISTANT



GRAFFITY RESISTANT



TERMITES RESISTANT



IMPACT RESISTANT



FLAME RESISTANT



ABRASION RESISTANT

INDIA'S MOST FAVOURITE DECORATIVE COLLECTION

